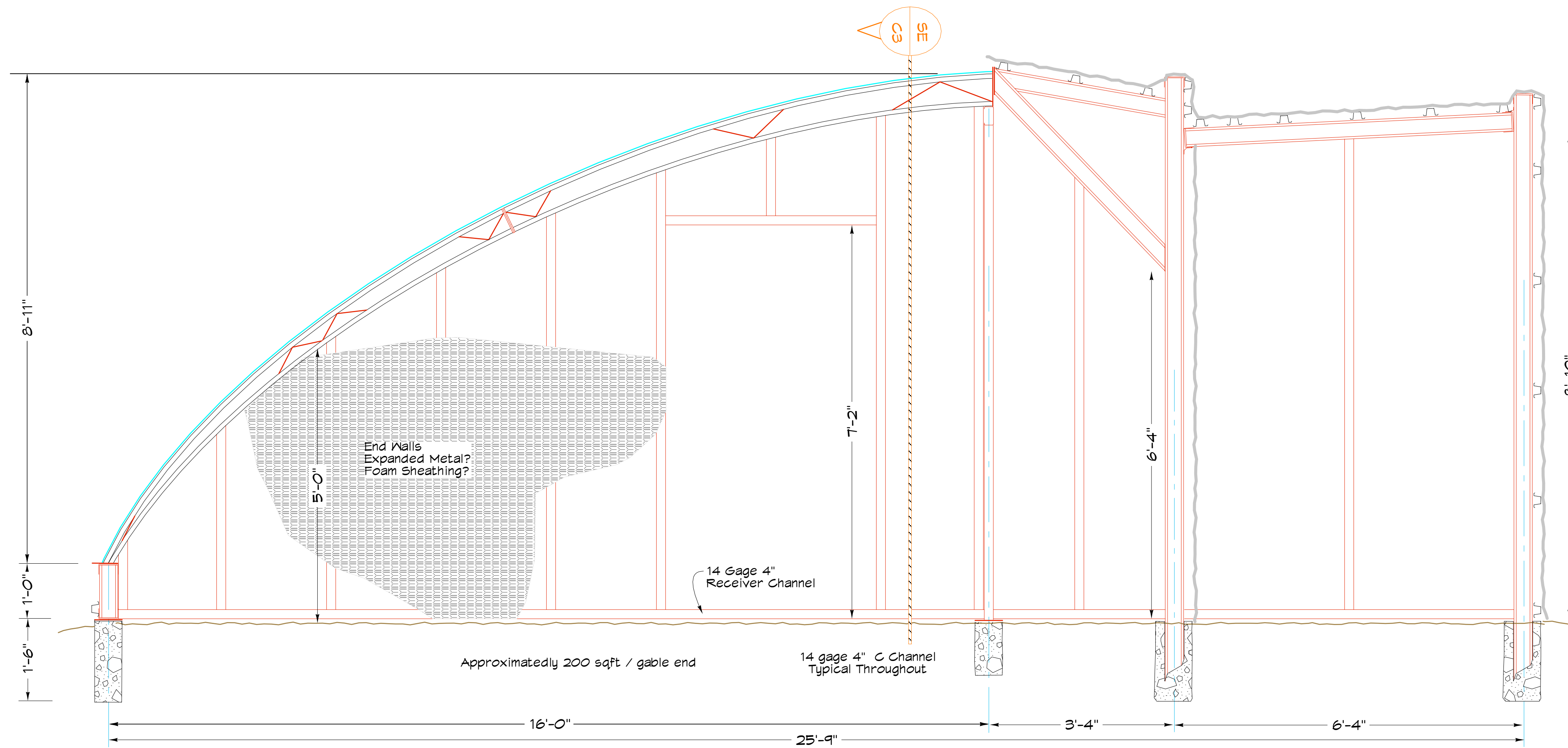
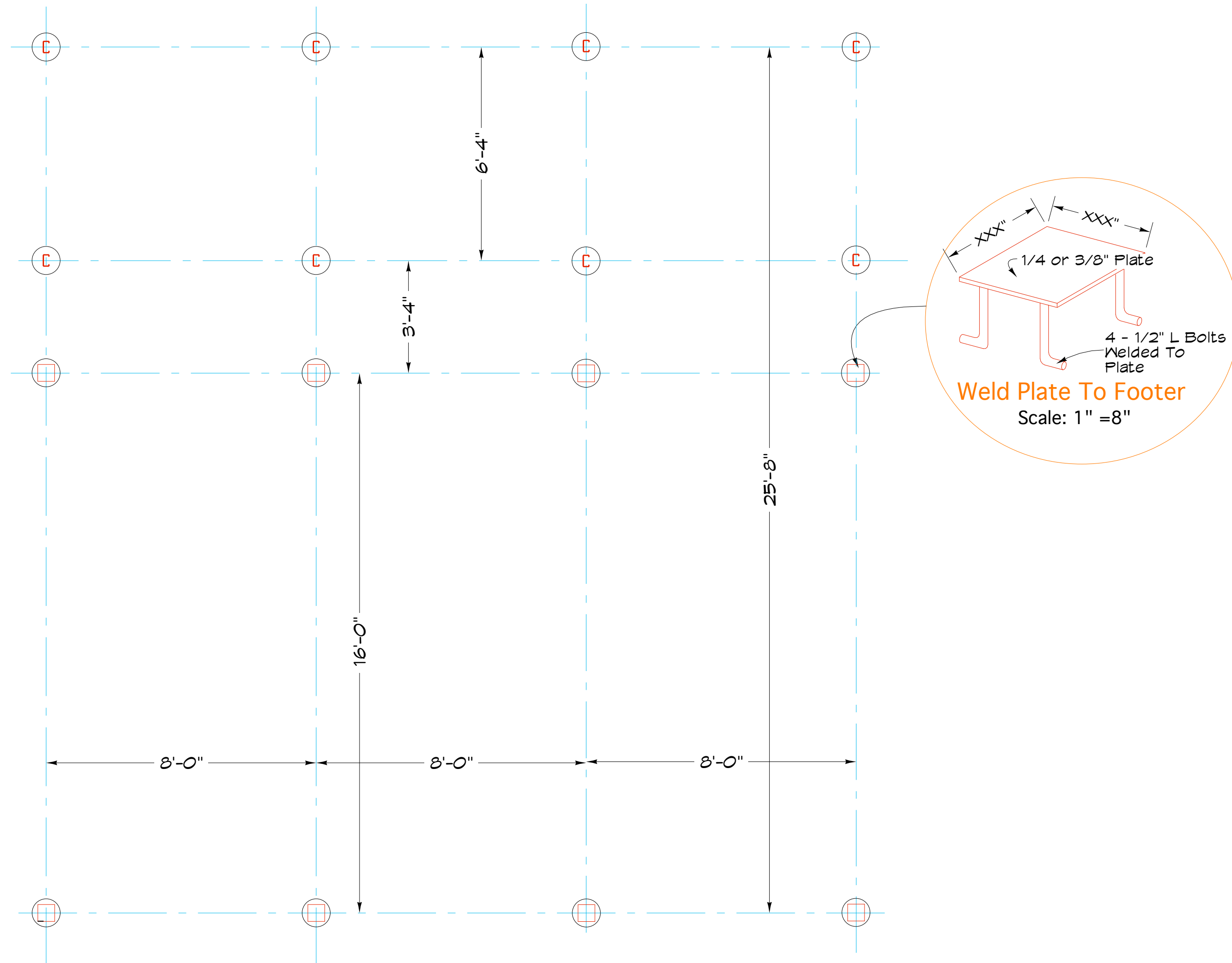


Section C3 At End Wall
 Scale: 1" = 4"



Modular Greenhouse Gable End Framing
 Scale: 1" = 16"

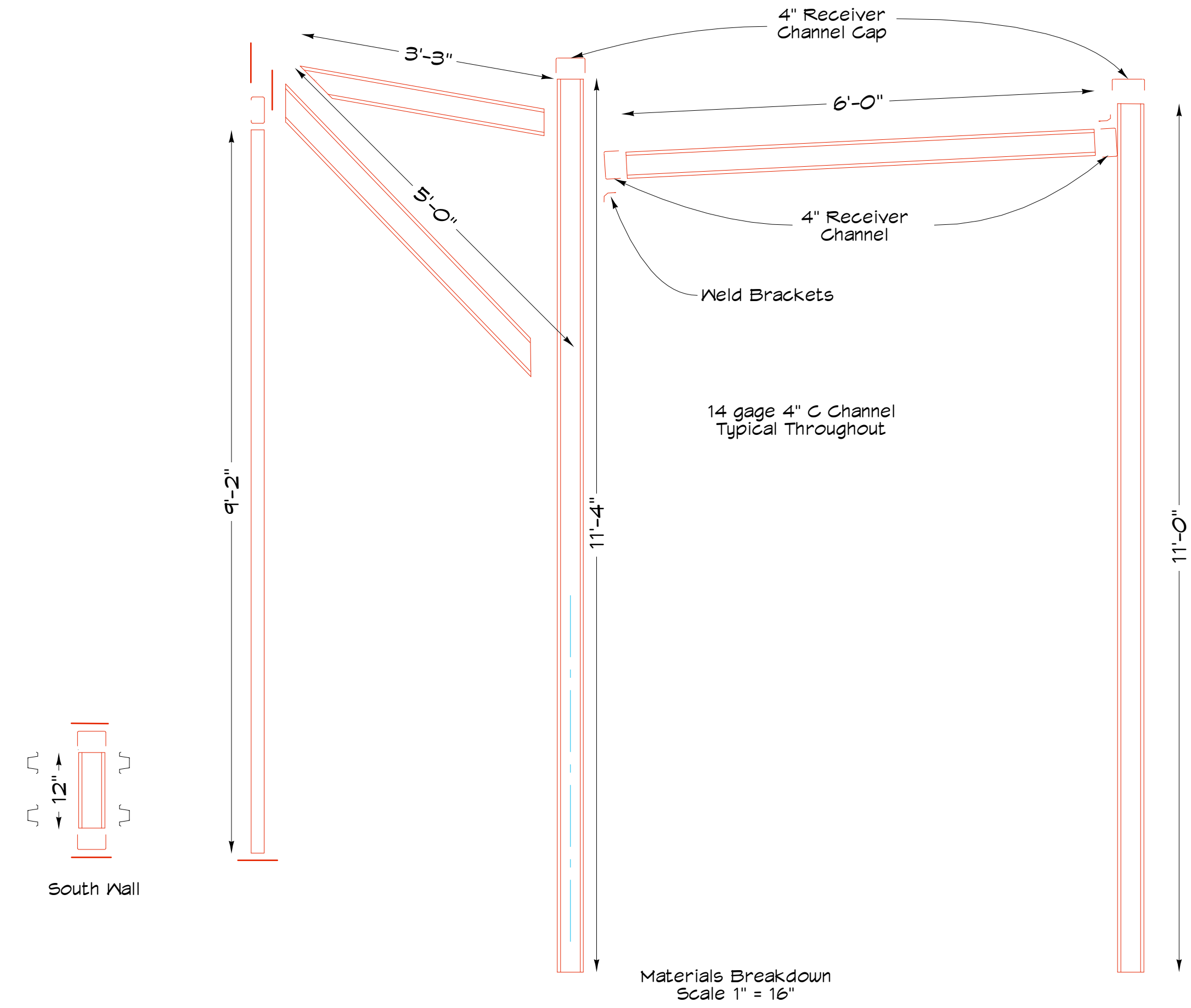
- Gable End & Wall Infill Materias
 2 - Extra Truss Members
 12 - 10' pcs. 4" C Channel
 8 - 8' pcs.
 4 - 16' pcs 4" Receiver Channel



645 Modular Greenhouse Foundation

Scale: 1" = 32"

4 piers per truss section @ .36 yard / pier = 1.5 yd / truss section



Materials 431 Greenhouse (Minus Trusses)

Approximately 360 sqft. Visqueen = \$??
 Framing For 4 Truss Sections
 Approximately 1/3rd yd. / pier for 12 piers = 4 yd.
 1/2" rebar 100 Inft. @ \$0.25 / Inft. = \$30
 50 Inft 14 gage 4" C Channel / Framing Section = \$50 x 3 Sections = \$150
 Takes 6 pc. 14 gage Receiver Channel / 16' Section @ 16' = \$110
 Takes XX 16' pcs. 20 gage 7/8" Hat Channel / 16' Section = \$200
 Takes 600 sqft. metal lathe @ \$0.36 / sqft. = \$220
 Takes 16 pcs. 1/4" x 8" x 8" base plates @ \$2 ea. = \$32

Infill Walls
 120 Inft 14 gage 4" C Channel / Framing Section = \$50 x 3 Sections = \$120
 14 gage Receiver Channel 200 Inft = \$230

Misc. = \$200

Alternate:
 Use 3.5" Schedule 40 pipe for columns add \$150