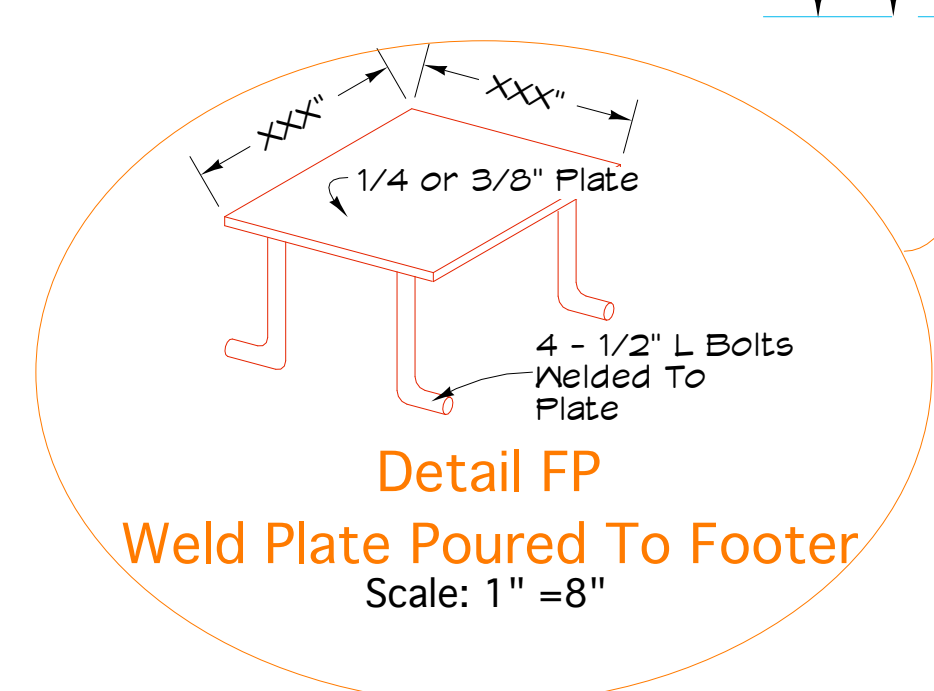
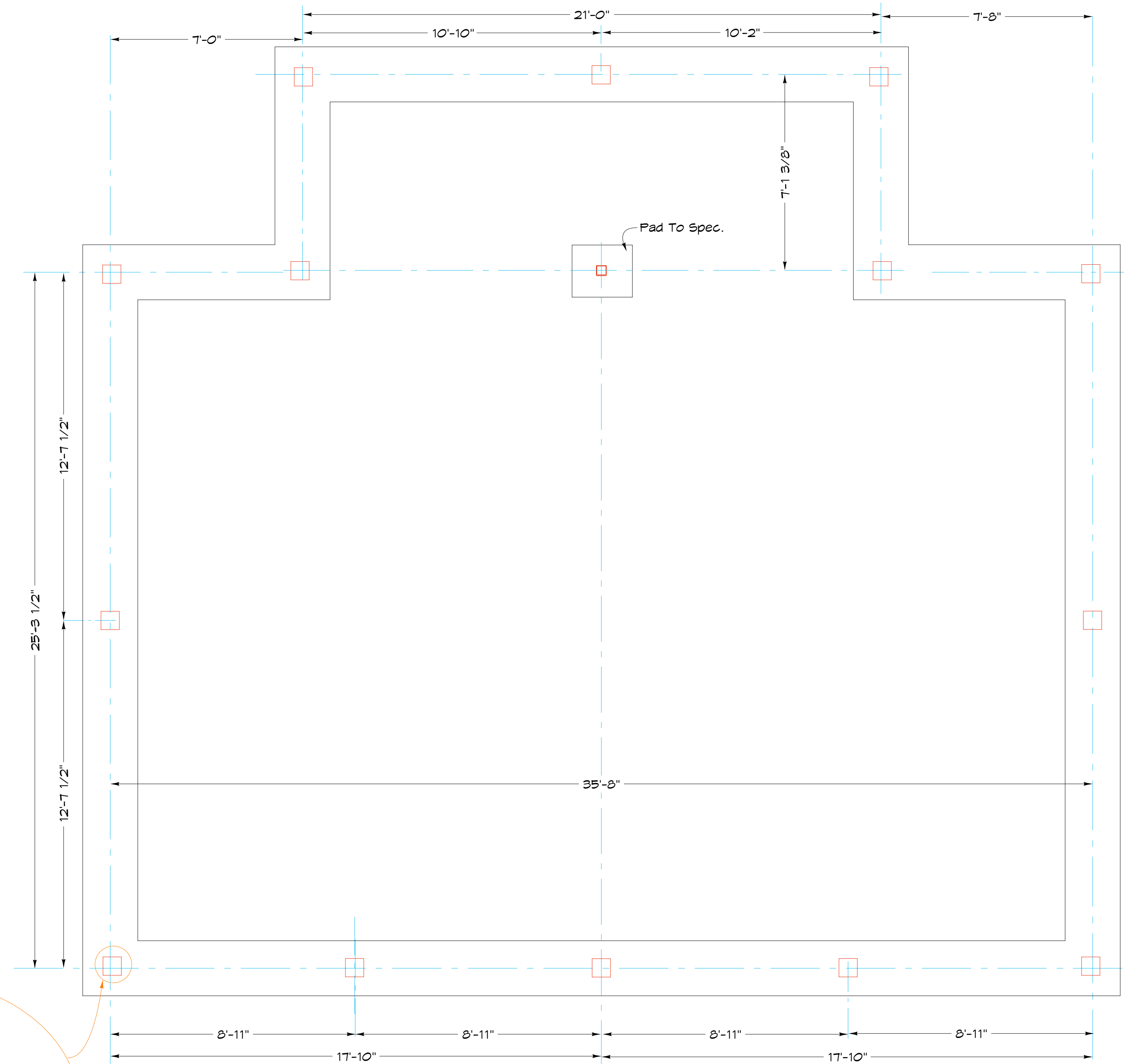




Perimeter 134'
 Sqft 1028 Floor
 1608 Sqft Ext. Walls

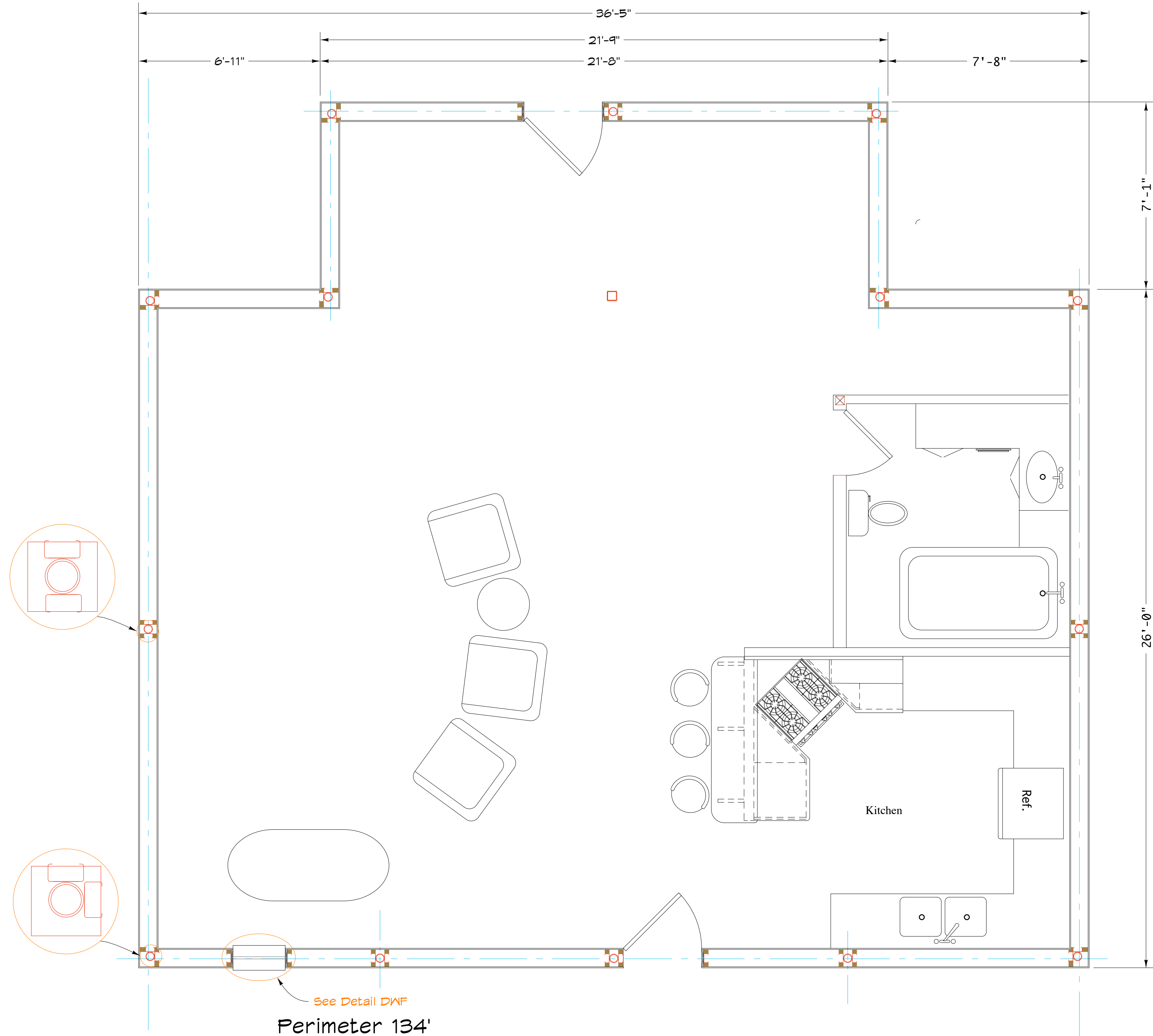
Potential Foundation Plan

Scale: 1" = 32"
 1028 Sq ft



Potential Floor Plan

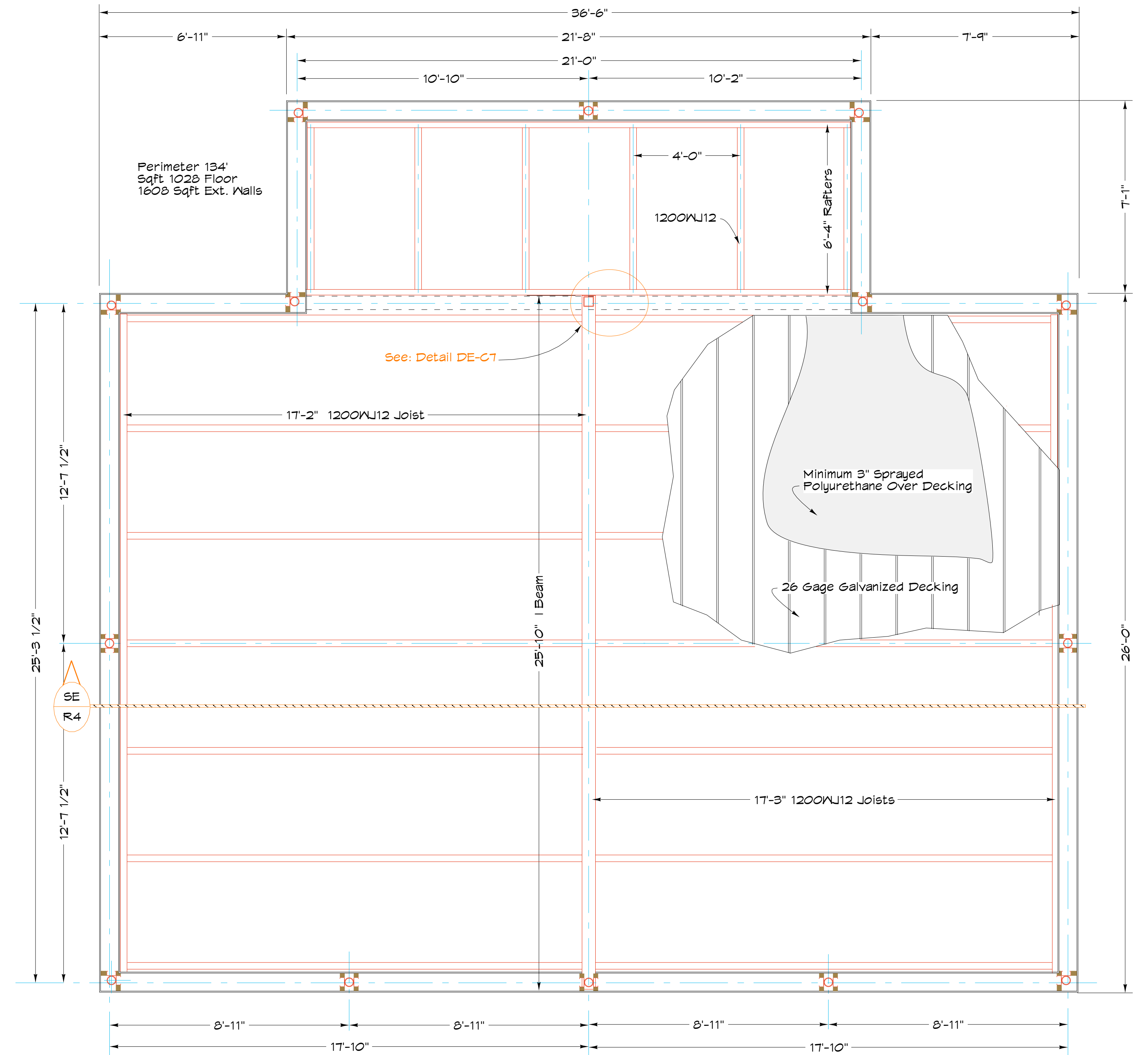
Scale: 1" = 32"
 1028 Sq ft



Perimeter 134'
 Sqft 1028 Floor
 1608 Sqft Ext. Walls

Potential Foundation Plan

Scale: 1" = 32"
 1028 Sq ft

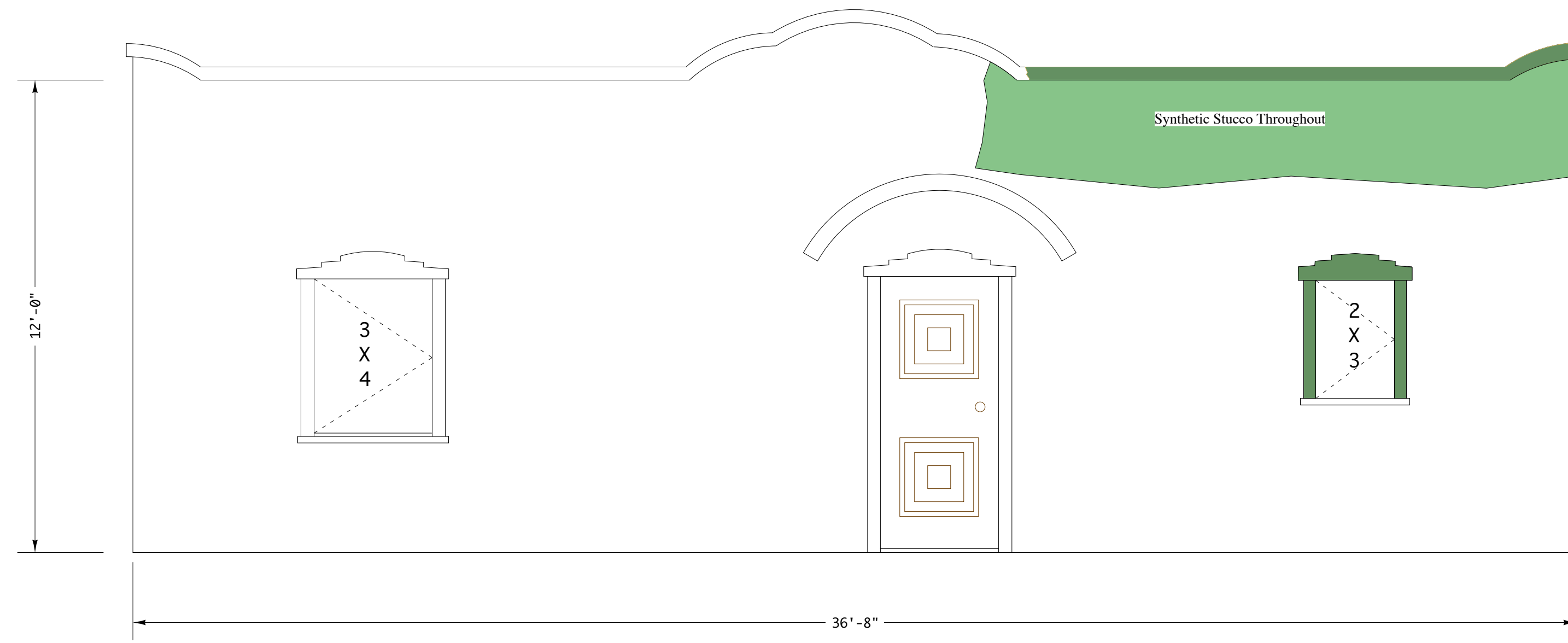


Potential Roof Plan

Scale: 1" = 32"
 1028 Sq ft

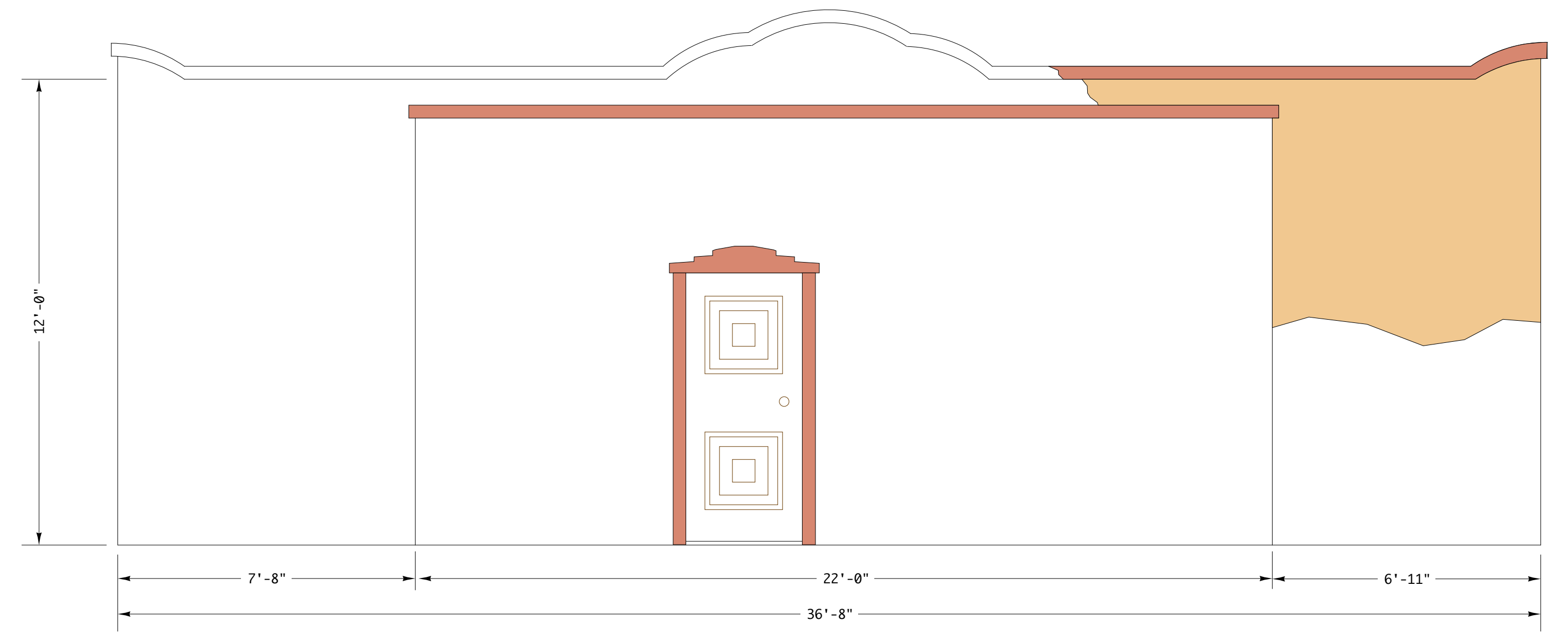
South Elevation

Scale: 1" = 32"



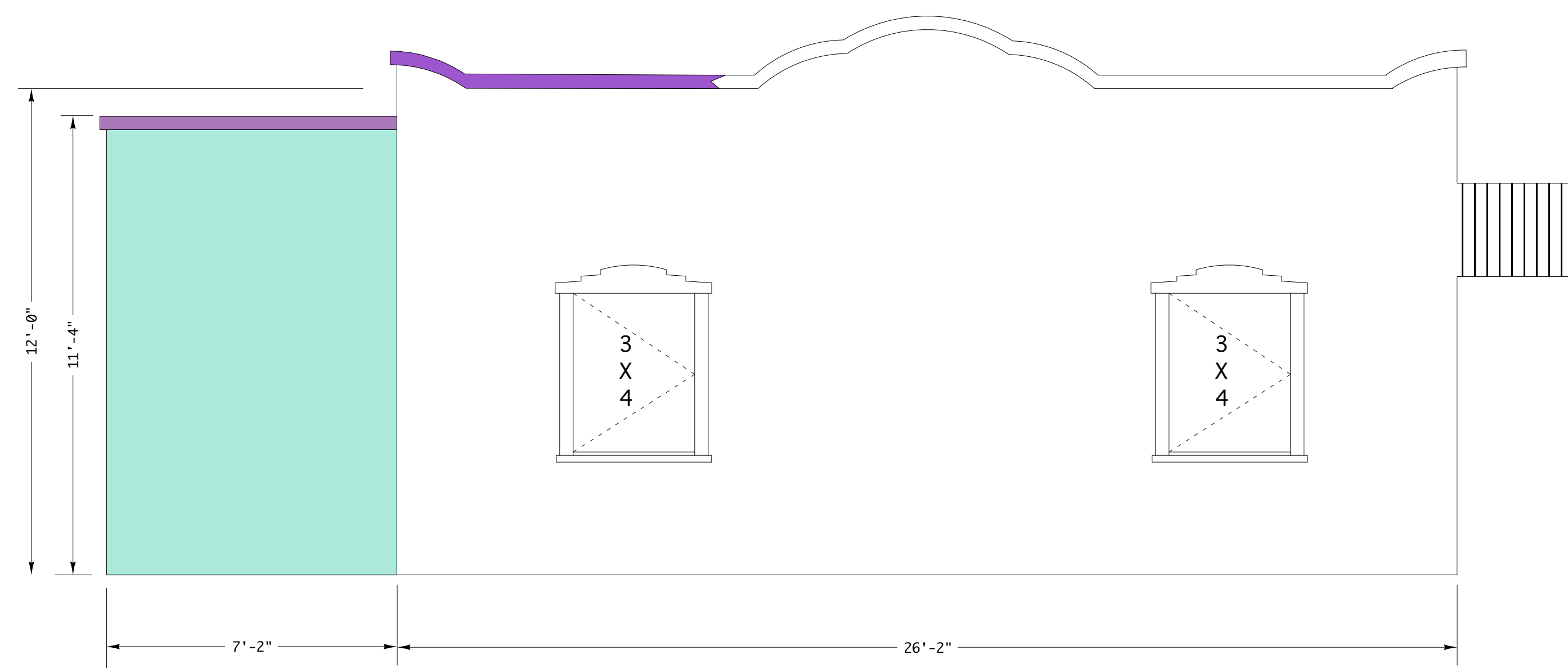
North Elevation

Scale: 1" = 32"



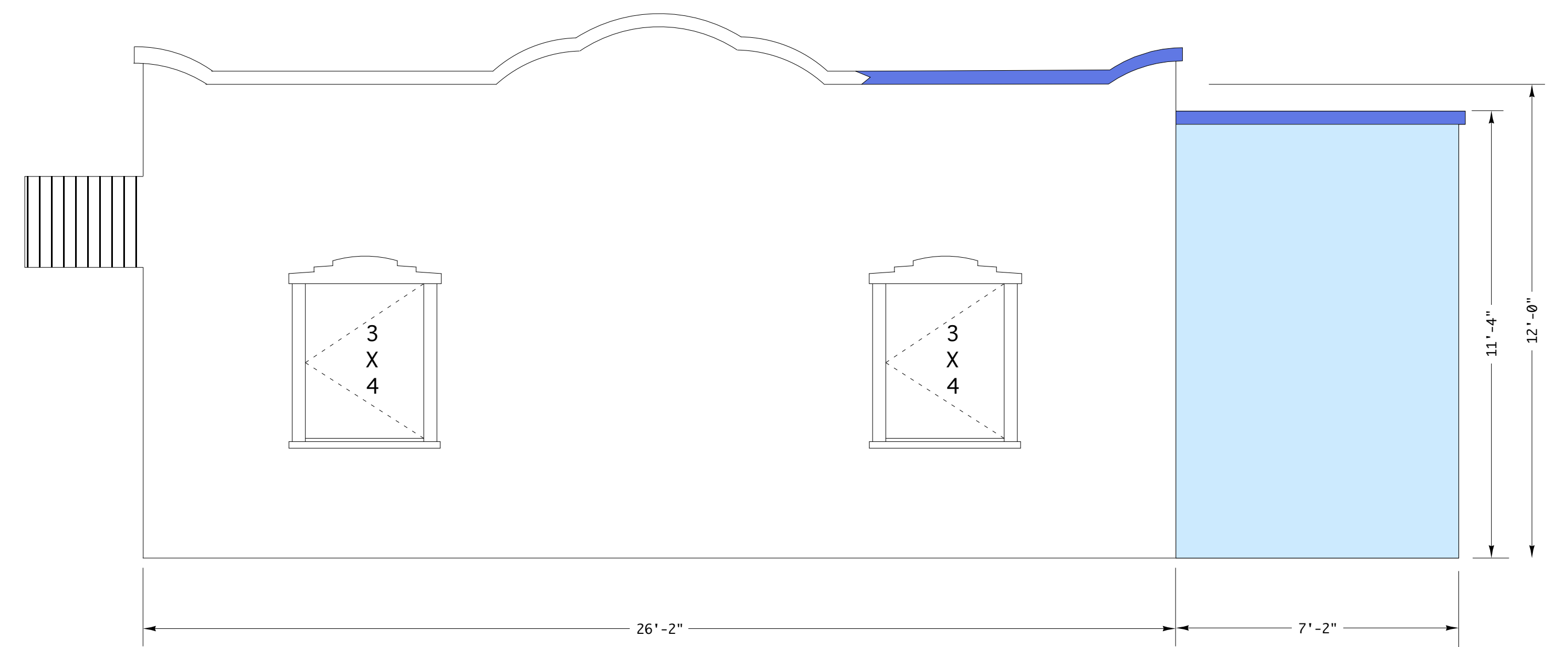
West Elevation

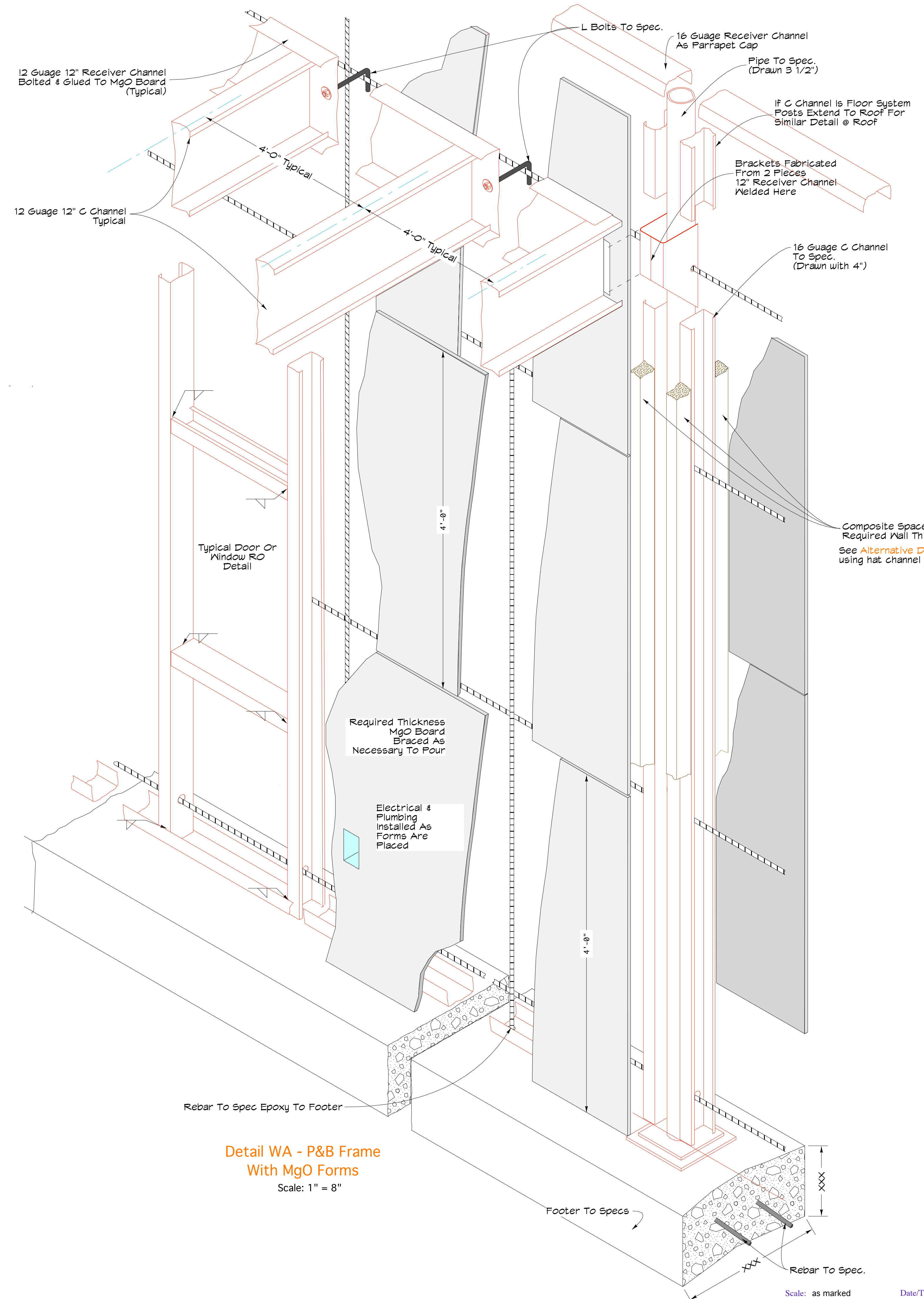
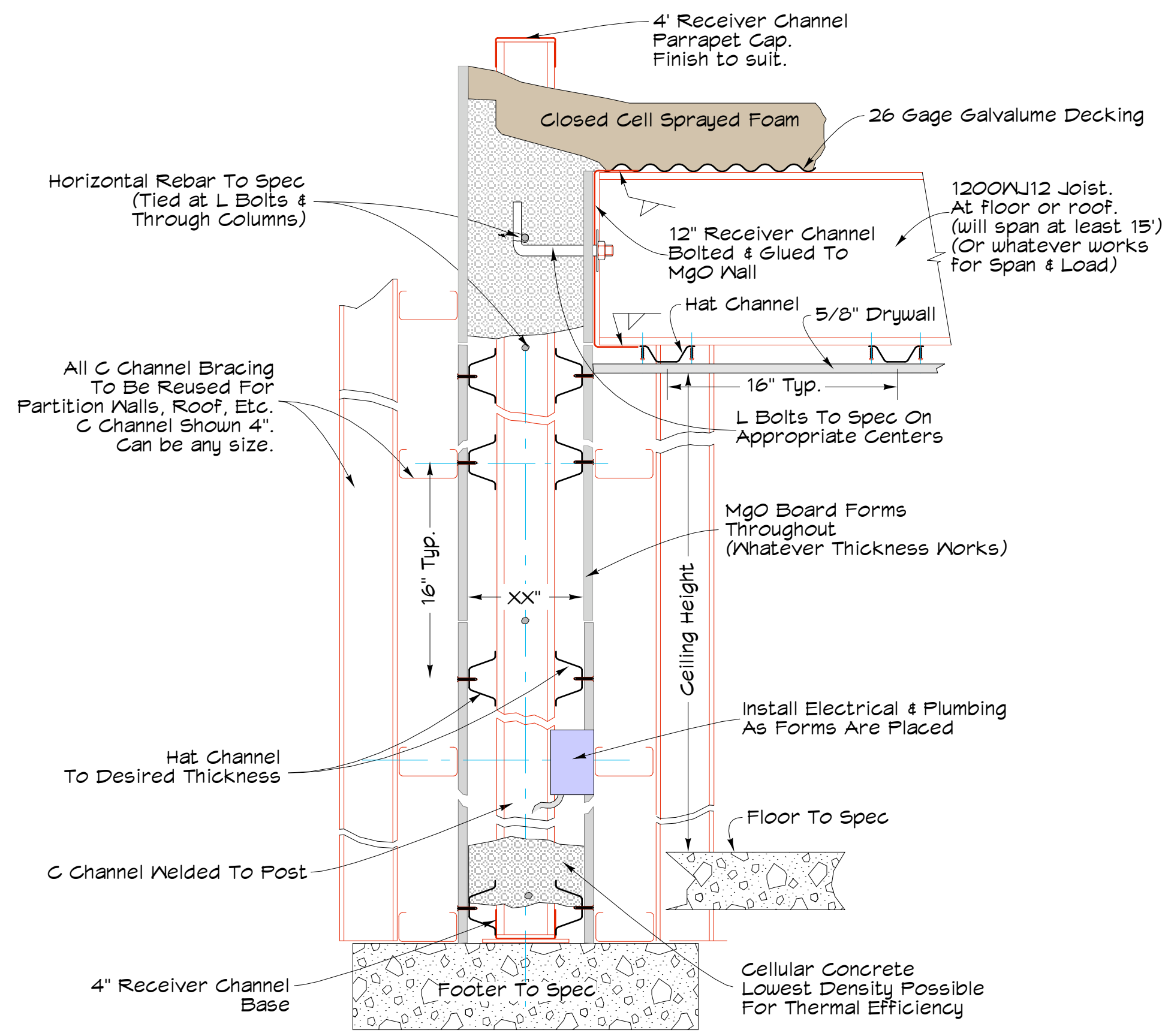
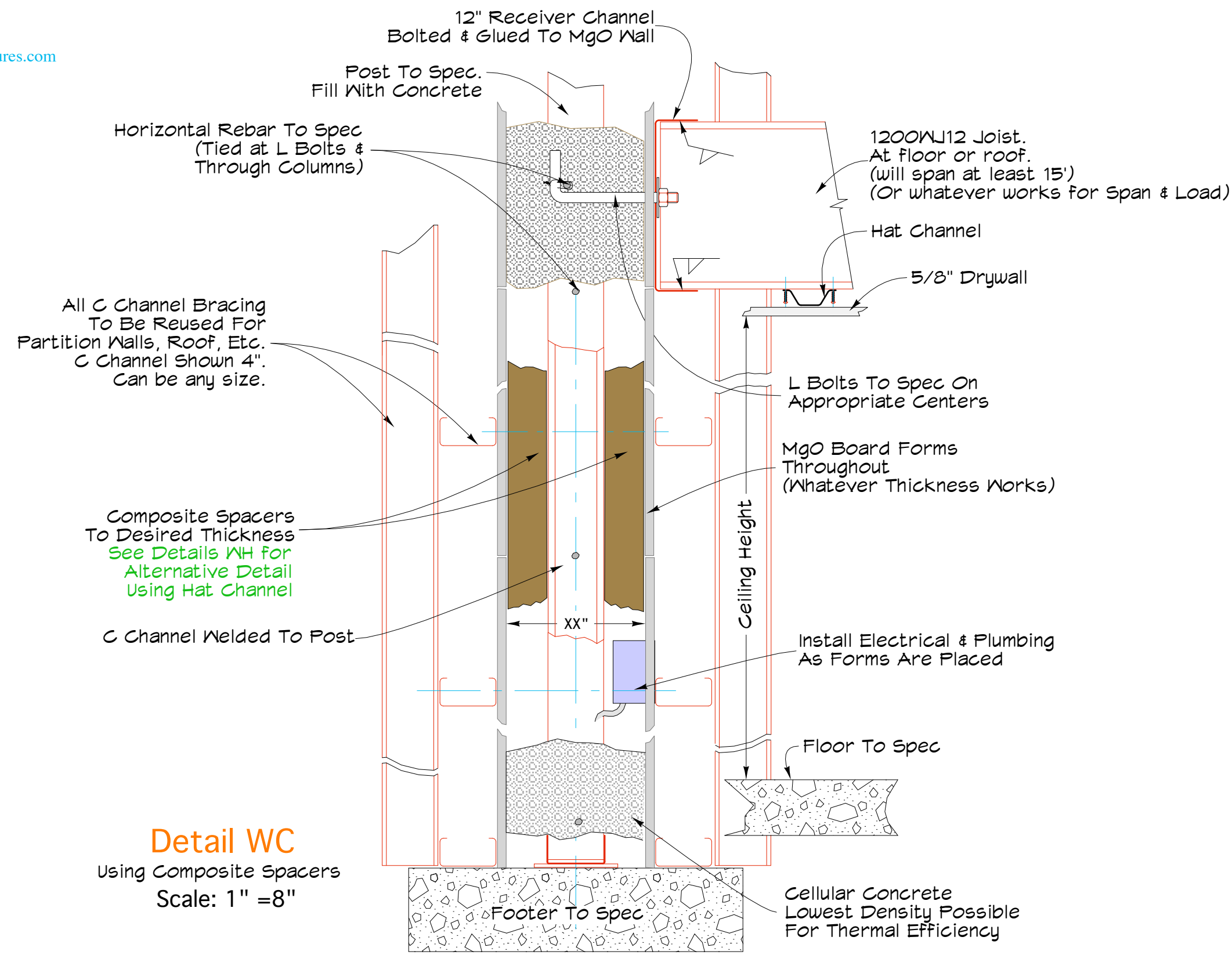
Scale: 1" = 32"

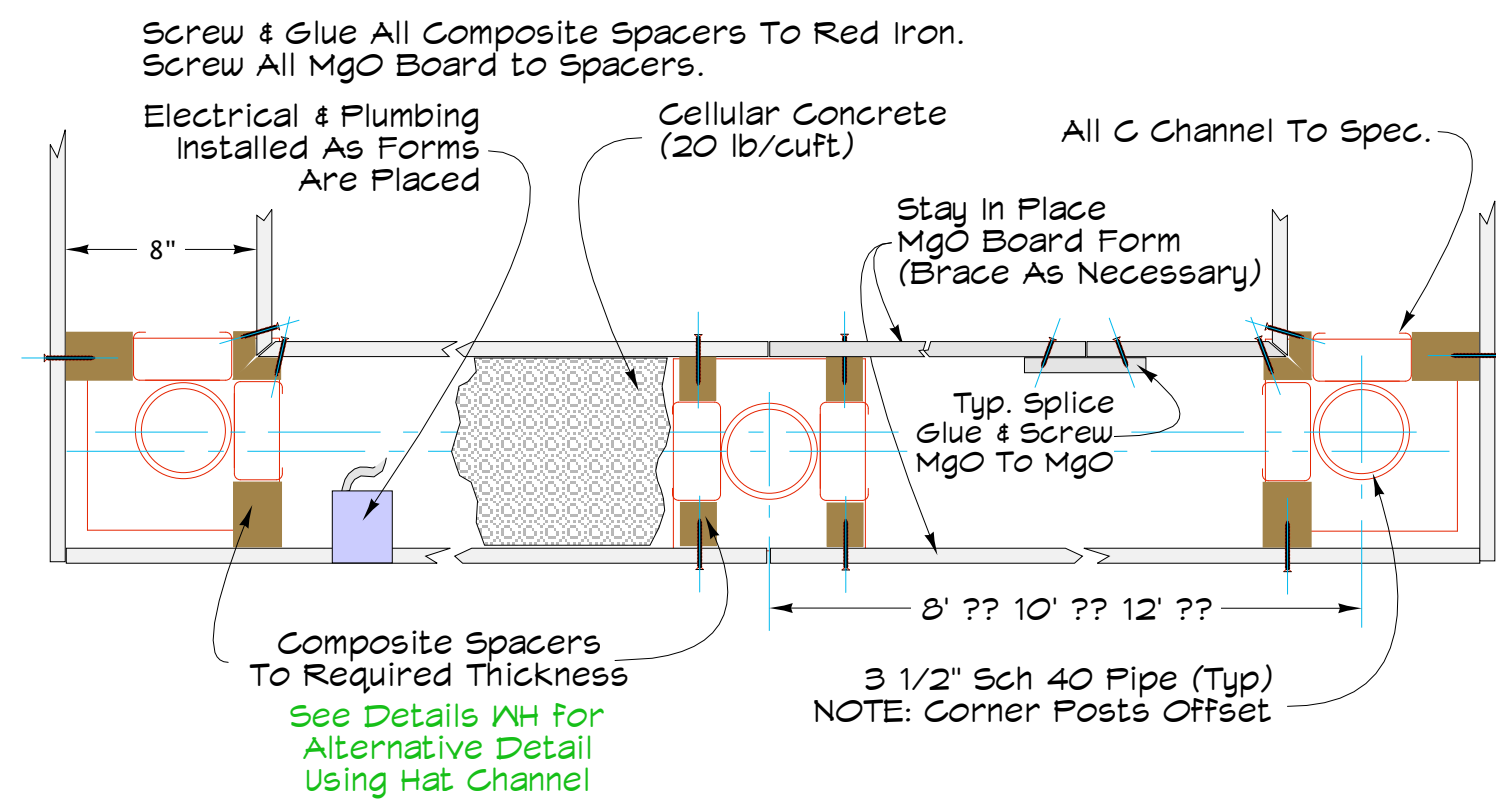
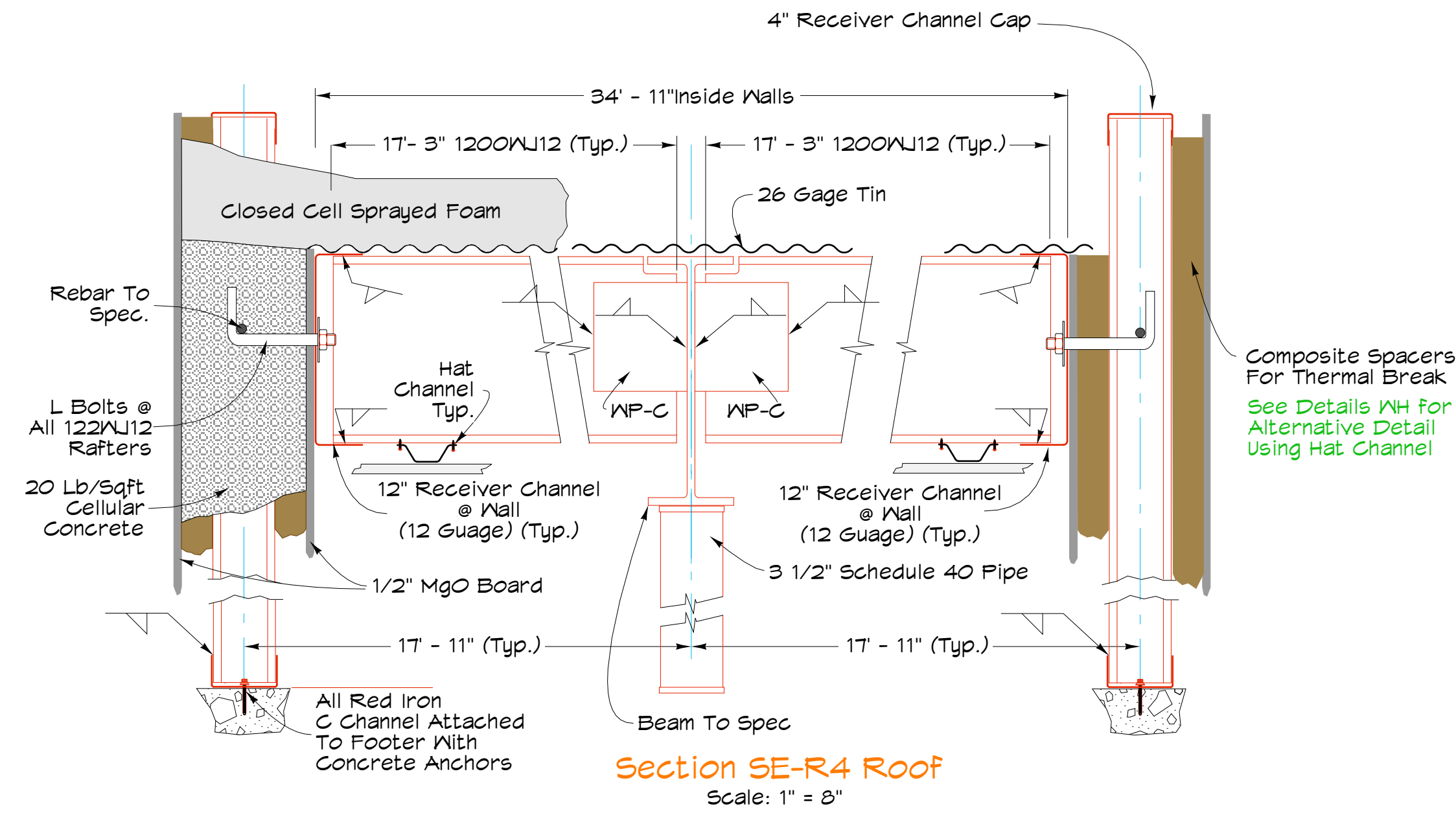


East Elevation

Scale: 1" = 32"







Typical CIP Layout of MgO Board Forms

Scale: 1" = 8"

Note: For information on the MgO board Search - Magnesium Oxide Board.

For information on the cast in place cellular concrete call Steve Brenna at 505-603-5660. Email neopoli@gmail.com

